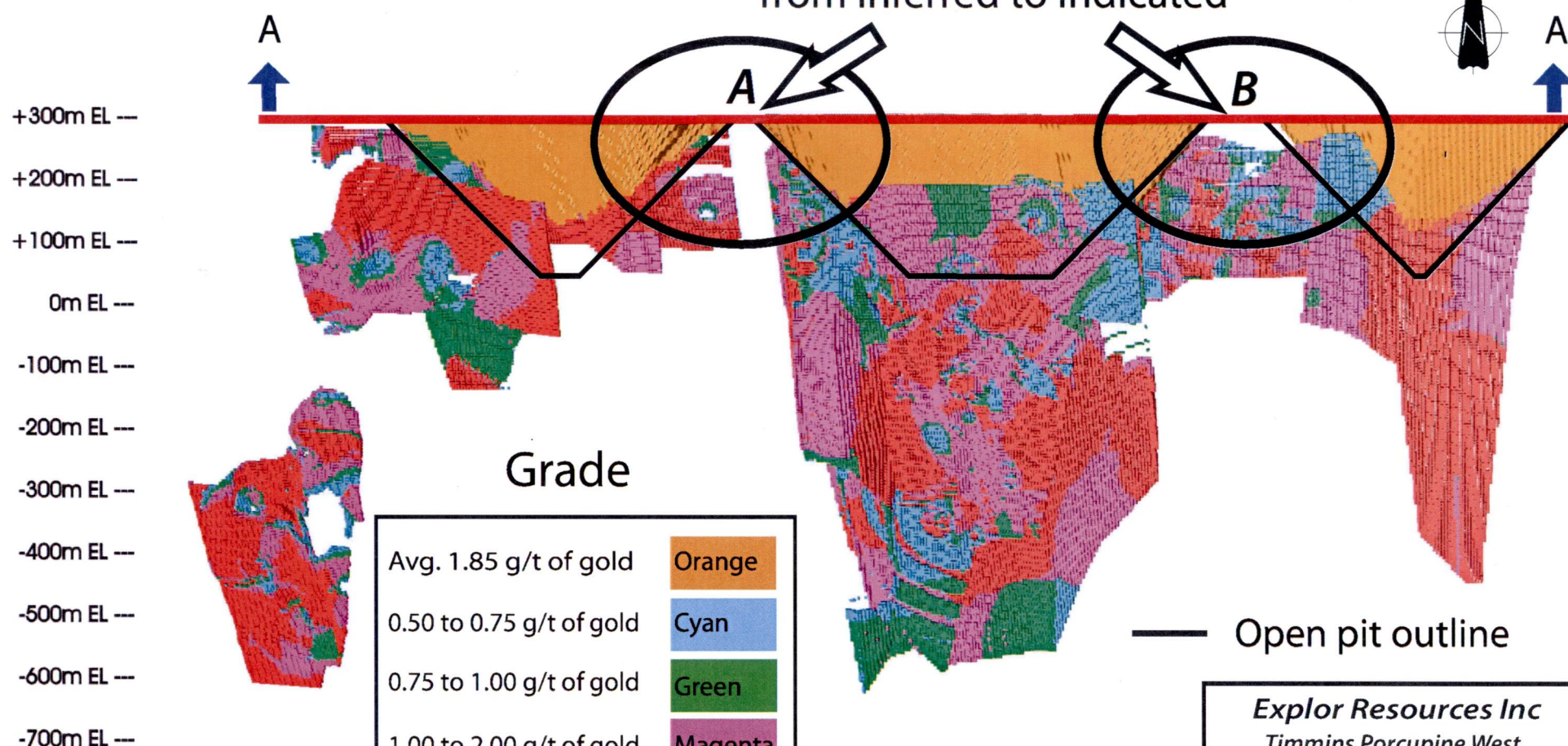


# Drill target area to change resource category from inferred to indicated



+300m EL ---  
 +200m EL ---  
 +100m EL ---  
 0m EL ---  
 -100m EL ---  
 -200m EL ---  
 -300m EL ---  
 -400m EL ---  
 -500m EL ---  
 -600m EL ---  
 -700m EL ---

## Grade

Avg. 1.85 g/t of gold	Orange
0.50 to 0.75 g/t of gold	Cyan
0.75 to 1.00 g/t of gold	Green
1.00 to 2.00 g/t of gold	Magenta
plus 2.00 g/t of gold	Red

— Open pit outline

0m 100 200m

**Explor Resources Inc**  
 Timmins Porcupine West  
 Bristol Township  
 Long Section

NTS 42A/06 UTM Zone 17 (NAD 83)  
 Chris Dupont, ing May 2013